



**BTEC TECH
AWARD IN HEALTH
& SOCIAL CARE**

MS ROBERTSON



WHAT DO YOU THINK?

WHAT IS HEALTH AND SOCIAL CARE
ALL ABOUT?

WHY STUDY HEALTH & SOCIAL CARE?

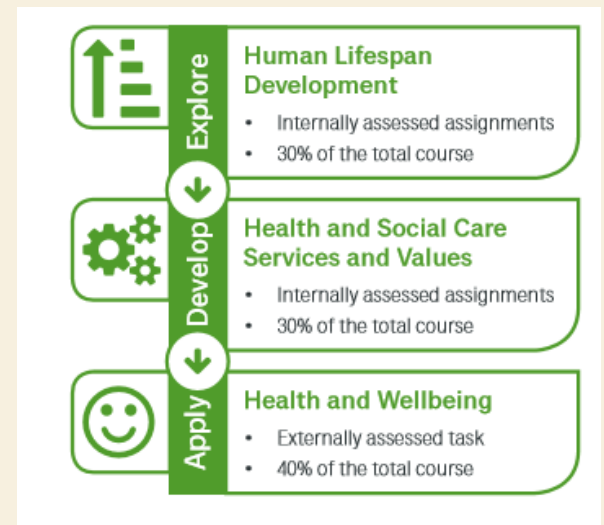
- About 3 million people work in health and social care. Health care roles include doctors, pharmacists, nurses, midwives and healthcare assistants, while social care roles include care assistants, occupational therapists, counsellors and administrators.
- Together, they account for nearly one in ten of all paid jobs in the UK. Demand for both health and social care is likely to rise, so they will continue to play a key role in UK society and the demand for people to carry out these vital roles will increase.
- Study of this sector at Key Stage 4 will complement GCSE study through providing an opportunity for practical application alongside conceptual study. There are also strong opportunities for post-16 progression in this important sector.

WHAT WILL YOU STUDY?

- You will study the BTEC Tech Award in Health & Social Care from the exam board Pearson.
- The BTEC Tech Award is an introduction to vocational learning.
- The Awards give you the opportunity to build skills that show an aptitude for further learning both in the sector and more widely.

WHAT WILL YOU STUDY?

- This course contains 40% synoptic external assessment. (Exam)
- This course contains 60% internal assessment. (Coursework)
- Be graded as a Pass/Merit/Distinction at Level 1 or Level 2.



How the course works...

As the **BTEC Tech Award in Health and Social Care** is a practical introduction to life and work in the sector, your students will be able to:

- develop their knowledge and understanding of the sector
- appreciate the importance of care values
- analyse and evaluate their skills.

The course has two internally assessed components, and one that's externally assessed:



These components build on each other to motivate your students by helping them put what they've learned into practice and grow in confidence.

INTERNAL ASSESSMENT

Component 1 – Human Lifespan Development

You will investigate how, in real situations, human development is affected by different factors and that people deal differently with life events.

Component 2 – Health and Social Care Services and Values

You will study and explore practically, health and social care services and how they meet the needs of real service users. You also develop skills in applying care values.

Component 1

Human Lifespan Development

Weighting: 30%

Aim: understand how we grow and develop throughout our lives.

Assessment: internally assessed assignments

During Component 1, your students will:

- **explore** how individuals develop physically, emotionally, socially and intellectually over time
- **investigate** how various factors, events and choices may impact on individuals' growth and development
- **discover** how people adapt to life events and cope with making changes.

[← How the course works](#)

[Component 2 →](#)

Baby egg project



Component 2

Health and Social Care Services and Values

Weighting: 30%

Aim: get to know how the Health and Social Care sector works and the care values that underpin it.

Assessment: internally assessed assignments

During Component 2, your students will:

- **learn** which health and social care services are available
- **identify** why people might need to use these services
- **discover** who's involved in providing these services
- **explore** what might stop people from accessing the services they need
- **look at** the care values the sector has to make sure people get the care and protection they need.

[← Component 1](#)

[Component 3 →](#)

SYNOPTIC EXTERNAL ASSESSMENT

Component 3 – Health and Wellbeing

You will study the factors that affect health and wellbeing, learning about physiological and lifestyle indicators, and how to design a health and wellbeing improvement plan.

Component 3

Health and wellbeing

Weighting: 40%

Aim: help improve someone's health and wellbeing.

Assessment: Externally assessed task, in which students create a health and wellbeing improvement plan for someone based on a brief.

To do this, your students will:

- **learn** what 'being healthy' means to different people
- **explore** the different factors that might influence health and wellbeing
- **identify** key health indicators and how to interpret them
- **assess** someone's health using what they've learned
- **create** a health and wellbeing improvement plan for that person which includes targets and recommendations of support services available
- **reflect** on the potential challenges the person may face when putting the plan into action.

[← Component 2](#)

[Where the course can lead >](#)

Where the course can lead...

With a **BTEC Tech Award in Health and Social Care**, your students are able to **explore**, **challenge** and **realise** their potential.

During the course, students can **see** whether the industry is one they'd like to be in, where they could go, and gain the knowledge and skills they need to succeed in their next steps.

After completing the course, your students can **continue** on to further vocational and academic study at level 2 and level 3, as well as apprenticeships and traineeships.

What's more, the practical transferable skills your students **master** during their studies such as self-reflection, communication, teamwork and problem solving will also support their progress in the present and the future.

Yesterday is gone. Tomorrow has not yet come. We have only today. Let us begin.

Mother Teresa

DECISIONS?

It is important to consider the following before choosing to opt this subject:

- Will this help you in your future career?
- Are you able to research independently?
- Can you communicate with others?
- Can you be organised and work hard to meet coursework deadlines?



SOCIAL CARE CAREERS

- <https://www.youtube.com/watch?v=6rh-XB07mcs&nohtml5=False>
- https://www.youtube.com/watch?v=xEe_HjfT3Uk&nohtml5=False
- <https://www.youtube.com/watch?v=gIVo-SIG2no&nohtml5=False>
- <https://www.youtube.com/watch?v=0qbaNHK5I98&nohtml5=False>
- <https://www.youtube.com/watch?v=OBxmqdBxsS4>

HAVE A GO YOURSELF!

- We need 3 volunteers to have some health measurements completed!
 - Oxygen Saturation
 - Blood Pressure
 - Peak Flow
-
- These are real measures of health that you would need to do as part of the course.

FOR FURTHER INFORMATION

- All the information you need is included in your options booklet.
- If you have any further questions see Ms Robertson