


**BTEC
EXTENDED
DIPLOMA IN
HEALTH AND
SOCIAL CARE**



THE BTEC NATIONAL IN
HEALTH AND SOCIAL CARE
IS A VOCATIONAL
QUALIFICATION THAT WILL
HELP PREPARE YOU FOR A
WIDE RANGE OF CAREERS
OR FOR FURTHER STUDY
ON A RANGE OF DEGREE
PROGRAMMES.

LEVEL 3 - EXTENDED DIPLOMA IN HEALTH AND SOCIAL CARE

- BTEC is Edexcel's brand for work-related qualifications based on the National Occupational Standards industry requirements.
- It is recognised by universities, employers and professional bodies across the UK.
- BTECs are based on a mix of mandatory and optional modules selected by the school to suit local employment opportunities and university options.
- The qualification can be used for direct entry into employment and/or Higher Education.

Career opportunities and further study

- childcare
- nursing
- paediatrics
- midwifery
- social work
- teaching and similar careers
- police service
- probation service
- medicine
- paramedics
- health visiting
- mental health
- counselling



The qualification is intended to carry UCAS points and is recognised by higher education providers as contributing to meeting admission requirements to many relevant courses, for example:



- BSc (Hons) in Nursing
- BA (Hons) in Social Work
- BSc (Hons) in Physiotherapy
- BSc (Hons) in Occupational Therapy
- BSc (Hons) in Speech Therapy
- BA (Hons) in Health and Social Care.

Learners should always check the entry requirements for degree programmes at specific higher education providers.

SKILLS YOU NEED FOR YOUR SECTOR

For virtually all careers in the health and social care sector, you will need to have the following skills:

- Good communication skills
- Good interpersonal skills
- The ability to work well as a member of a team
- Cognitive and problem-solving skills
- Presenting yourself professionally
- The ability to manage your time effectively.

Studying for the BTEC National in Health and Social Care allows you to practise all of these skills utilising different styles of learning. You will encounter and appreciate various methods to assess your understanding and knowledge of the different subject areas.

HOW DOES THE QUALIFICATION PROVIDE EMPLOYABILITY SKILLS?

- Cognitive and problem-solving skills: use critical thinking, approach non-routine problems applying expert and creative solutions, use systems and technology
- Intrapersonal skills: communicating, working collaboratively, negotiating and influencing, self-presentation
- Interpersonal skills: self-management, adaptability and resilience, self-monitoring and development.

ASSESSMENT

- Assessments may include projects, reports, leaflets, presentations, case studies, observations etc.
- Measured at Pass, Merit and Distinction, Distinction*
- External assessment (42%).
- Assessment quality assured through internal and external verification

COURSE STRUCTURE:

- 1080 GLH (1530 TQT) Equivalent in size to three A Levels. 13 units of which 8 are Mandatory and 4 are optional. Mandatory content (72%). External assessment (42%).
- Each of the components of the course are marked with a Pass, Merit, Distinction. These convert to points, on completion of the components. Your score will be added up to give you your overall Level which again will be in a Pass, Merit, Distinction or distinction*.
- For UCAS this will be converted into points.

FOR BTEC, YOU WILL DEVELOP THINKING PROCESSES THAT REQUIRE YOU TO

- Recall knowledge and information
- Understand, apply and analyse it so that you can judge how important or valuable something is, and
- Create new ideas.

These thinking processes will underpin your assignments and assessments

BTEC NATIONALS



- "BTEC Nationals have always required applied learning that brings together knowledge and understanding (the cognitive domain) with practical and technical skills (the psychomotor domain).
- This is achieved through learners performing vocational tasks that encourage the development of appropriate vocational behaviours (the affective domain) and transferable skills.
- Transferable skills are those such as communication, teamwork, research and analysis, which are valued in both higher education and the workplace."

UNIVERSITY AND COLLEGE APPLICATION SYSTEM- UCAS POINTS EQUIVALENCE

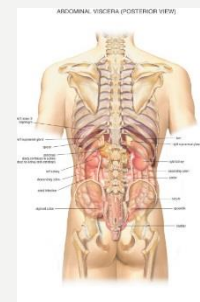
- BTEC Extended Diploma is equivalent to 3x GCE A levels!
- PPP = 3 E grade A levels = 120 points
- MMM = 3 C grade A levels = 240 points
- DDD = 3 A grade A levels = 360 points

COURSE OUTLINE

- The course consists of 13 units in total over the two years, there are 8 mandatory units and 5 optional units.

Mandatory Units:

- Unit 1 – Human Lifespan Development*
- Unit 2 – Working in health and Social Care*
- Unit 3 - Anatomy and Physiology for Health and Social Care*
- Unit 4 – Enquiries into Current Research in Health and Social Care**
- Unit 5 – Meeting Individual care and Support Needs
- Unit 6 - Work Experience in Health and Social Care
- Unit 7 – Principles of Safe Practice in Health and Social Care
- Unit 8 – Promoting Public Health



COURSE OUTLINE

Optional Units include:

- Unit 12 – Supporting Individuals with Additional Needs
- Unit 14 – Physiological Disorders and their Care



PLACEMENT

- Within the Personal and Professional Development unit students must complete **100** hours of work experience.
- This can be a variety of placements or concentrated to the student's desired work area.
- Placements will be reviewed and monitored and students will be provided with constant support.



WHY BTEC RATHER THAN A LEVEL?

- Prepares you for employment and for HE.



- ▶ Allows you to concentrate at your own pace.
- ▶ Allows you to tailor your research to those areas you wish to pursue in the future.



AFTER BTEC...



- Employment within the health and social care sector; health assistant, care assistant, early years worker.
- College based courses- access to Higher National BTEC's.
- University- access to a range of health and social care related courses such as: Social Work, Nursing (adult and child), Public Health, Early Years, Childhood Studies, Health and Wellbeing etc.